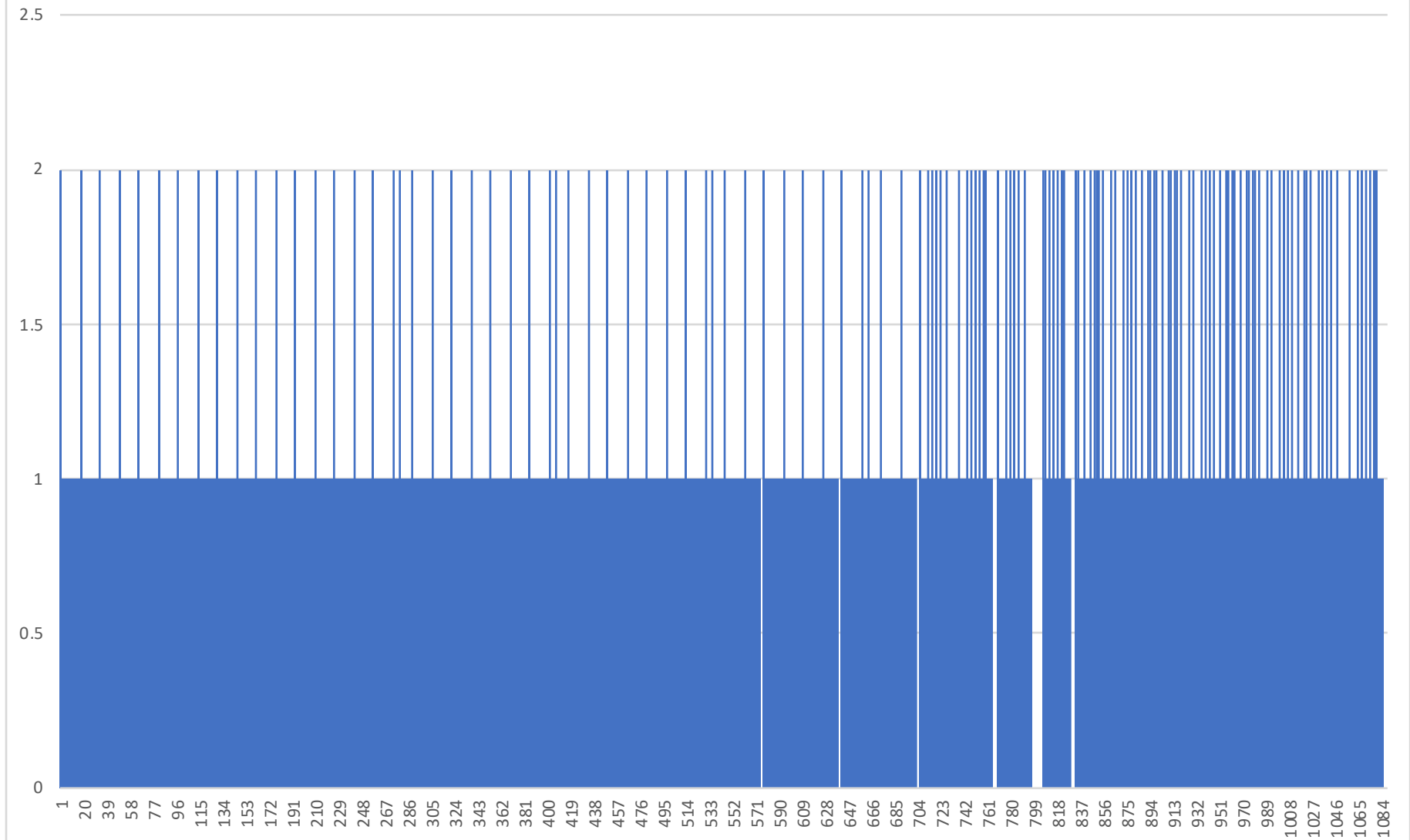


DAMN.: RHYTHMIC SPECTRAL ANALYSIS OF KENDRICK LAMAR'S BASSLINE FOR GOD.

MARK PETERING, PH.D.

2=ATTACK, 1=SUSTAIN, 0=REST

(1088 data points using 16th note as smallest duration)



Kendrick Lamar's *GOD.*: A Rhythmic Spectral Analysis of the Bassline
Dr. Mark Petering, Ph.D.
March 21, 2024

DAMN. is the album that won Kendrick Lamar Best Rap Album (Grammy Awards), Outstanding Album (NAACP Image Awards), and the Pulitzer Prize for Music, all in 2018. The Rhythmic Spectral Analysis of the bassline of the track *GOD.* from the aforementioned album captures the genius of time and activity on a traditional graph in 3 categories: attack (2 value), sustain (1 value) and rest (0 value). Nearly instantaneously a viewer can appreciate patterns, lack of patterns or variation of patterns that create communication and fullness to a listener.

The first instance of this technique of Rhythmic Spectral Analysis was created and utilized by Mark Petering in 1997 for a research paper while a student at Bowling Green State University.

The following can be inferred from the *GOD.* rhythmic spectral graphs:

Notice the regularity of attack points and rests in the chorus and verse section. This creates a feeling of predictability and stability for the listener and allows for continual assurance of a reliable bassline that slightly varies to maintain interest. This reinforces the lyric that presents a life of abundance and activity:

I'm at large, runnin' plays like a circuit, JT
I'm sellin' verses, JT, watch me work it, JT

Now notice, however, the lack of rests with increased and irregular attack points in the bridge with the following text excerpt:

I wanna see sometimes if you ignore it
I'm in the streets sometimes and can't afford it
I got a bad habit, levitatin', duckin' haters
Oh my! My heart is rich, my heart is famous

The irregularity of attack points helps reinforce lyrics that suggest instability in one's life being homeless while at the same time celebrating one's soul regardless of one's circumstance.

The subtle changes to the bassline in the bridge reveal expert craft and discernment that are reinforced by multiple bassline patterns reoccurring.

Finally, ironically, the longest rest in the bassline is in the bridge which has, however, the fewest rests in total compared to the previous section.

All of the above are discerned in the graphs provided on the following pages:

Dr. Mark Petering

Score

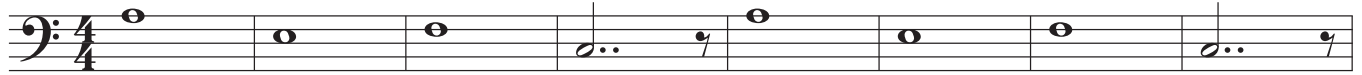
DAMN.: Bassline of Kendrick Lamar's GOD.

DAMN. won Best Rap Album (Grammy Awards),
Outstanding Album (NAACP Image Awards), and the Pulitzer Prize for Music, all in 2018

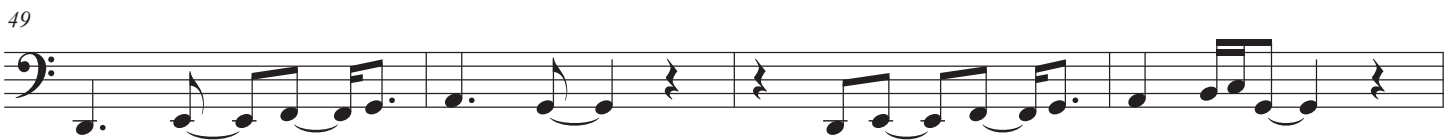
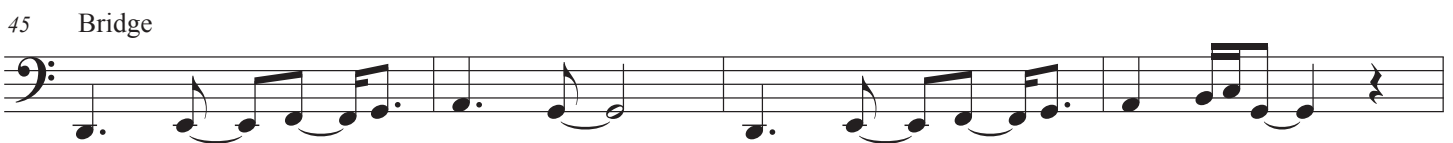
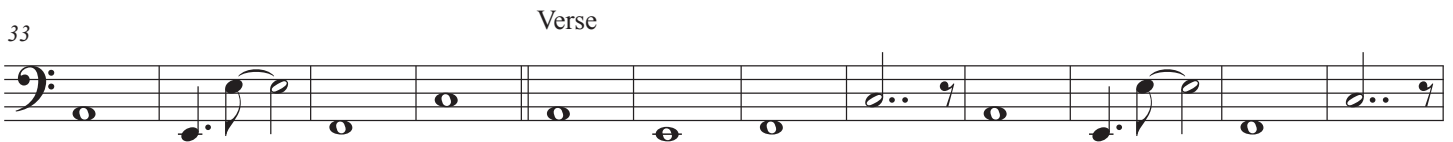
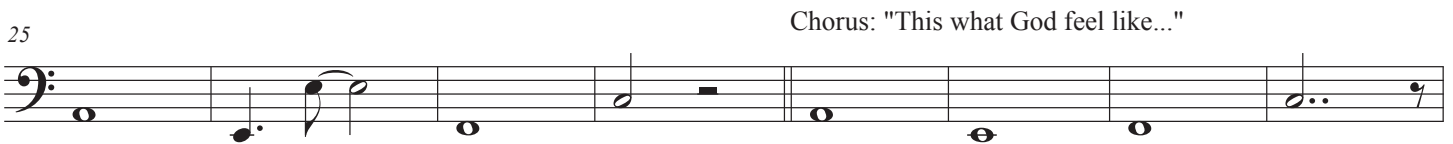
Transcription by Mark Petering

♩ = ca. 66.5

Chorus: "This what God feel like..."



8vb throughout----



DAMN.: Bassline of Kendrick Lamar's GOD.

57



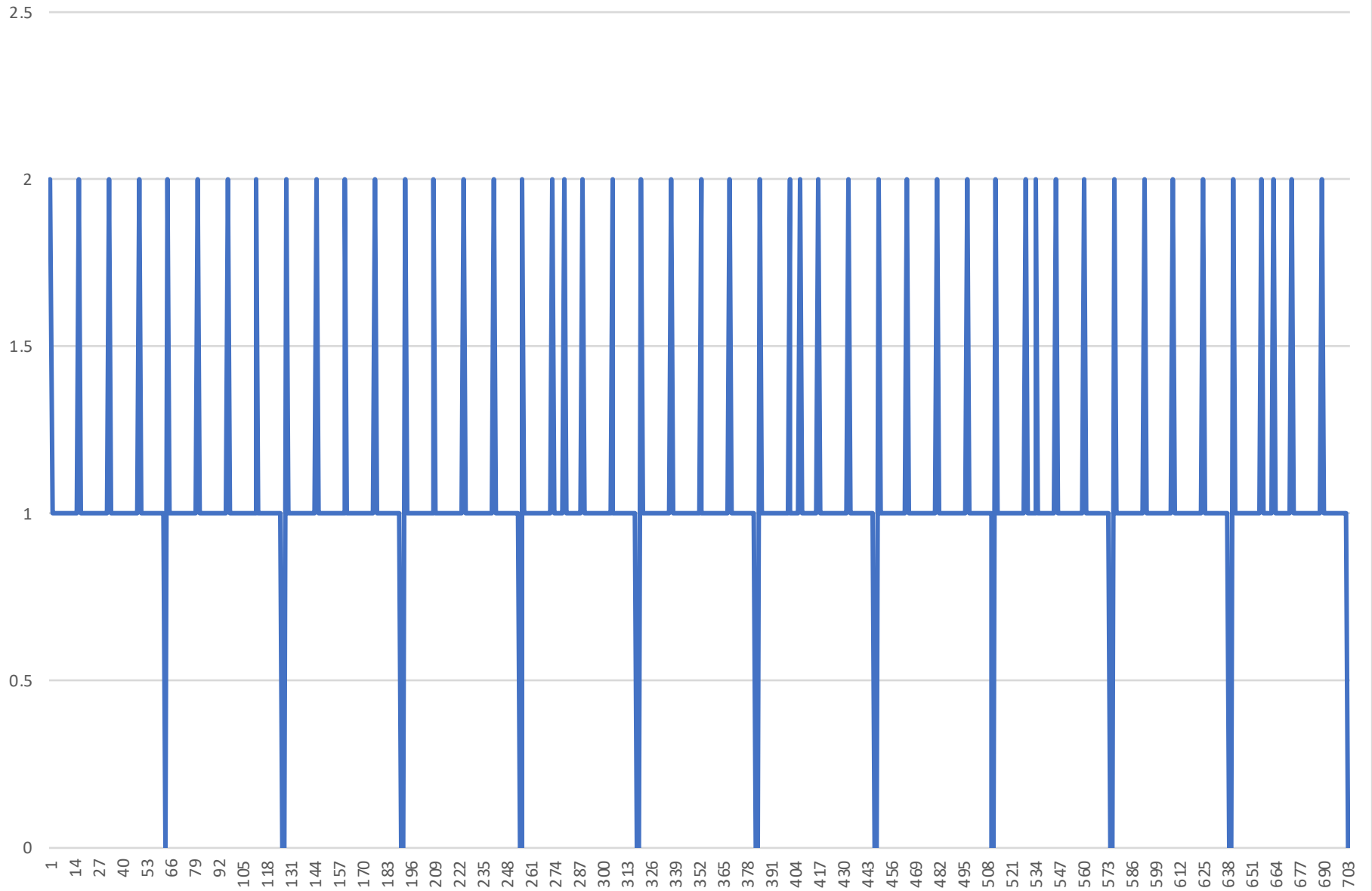
61



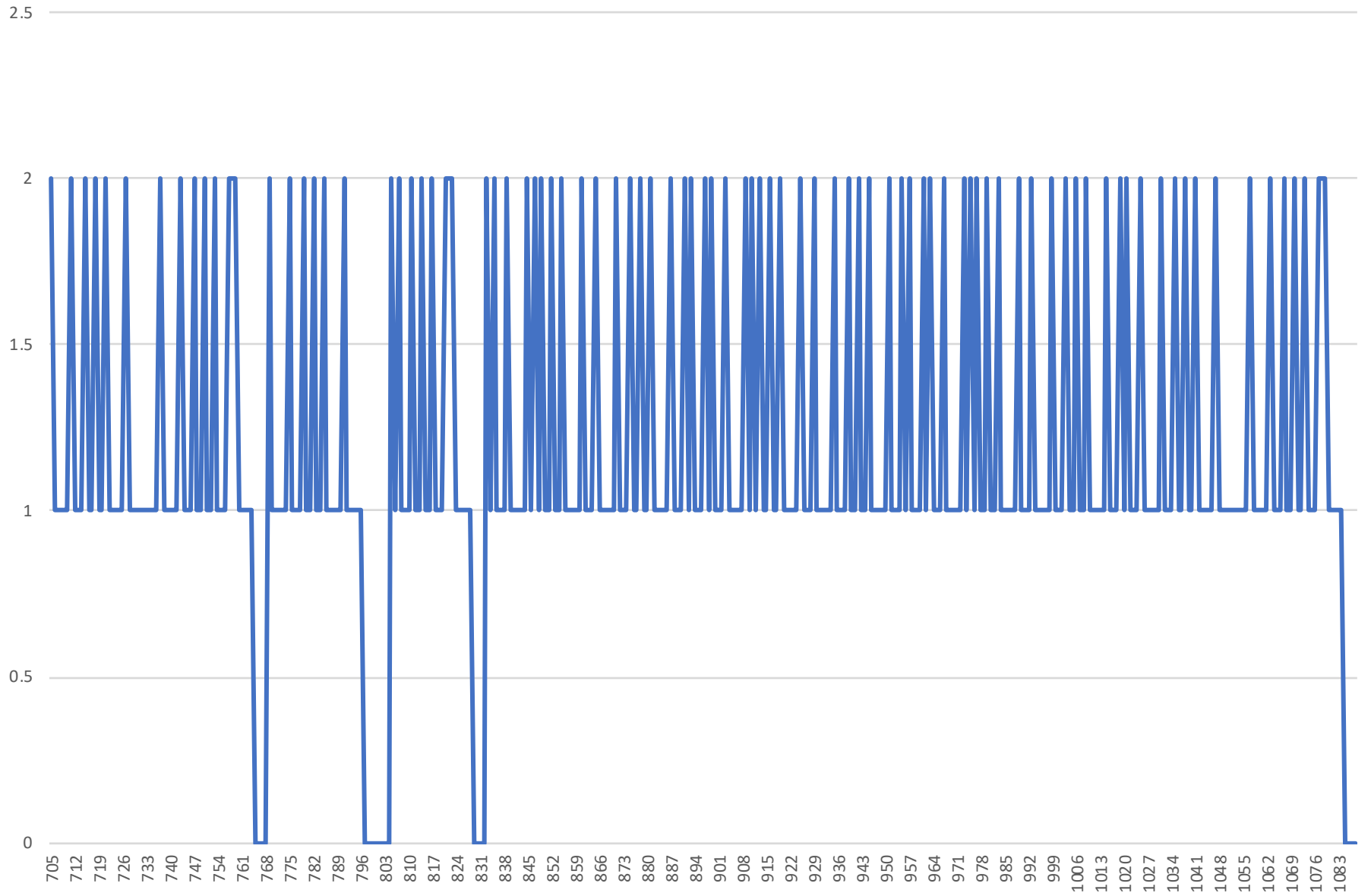
65



GOD.: CHORUS AND VERSES REPRESENTED AS A RHYTHMIC SPECTRAL ANALYSIS
MARK PETERING, PH. D.



GOD.: BRIDGE REPRESENTED AS RHYTHMIC SPECTRAL ANALYSIS
MARK PETERING, PH. D.



	Bassline from GOD. from Kendrick Lamar's DAMN.			
		2018 Pulitzer Prize		
1088	Data Points for Bassline	2=Attack	1=Sustain	0=Rest
		Dr. Mark Petering - Rhythmic Spectral Analysis		
	16 - 16th notes of activity accounted for in every measure:			
	Measure	Unit	Bassline Data	
	1	1	2	
	1	2	1	
	1	3	1	
	1	4	1	
	1	5	1	
	1	6	1	
	1	7	1	
	1	8	1	
	1	9	1	
	1	10	1	
	1	11	1	
	1	12	1	
	1	13	1	
	1	14	1	
	1	15	1	
	1	16	1	
	2	17	2	
	2	18	1	
	2	19	1	
	2	20	1	
	2	21	1	
	2	22	1	
	2	23	1	
	2	24	1	
	2	25	1	
	2	26	1	
	2	27	1	
	2	28	1	
	2	29	1	
	2	30	1	
	2	31	1	
	2	32	1	
	3	33	2	
	3	34	1	
	3	35	1	
	3	36	1	
	3	37	1	
	3	38	1	
	3	39	1	

	3	40	1		
	3	41	1		
	3	42	1		
	3	43	1		
	3	44	1		
	3	45	1		
	3	46	1		
	3	47	1		
	3	48	1		
	4	49	2		
	4	50	1		
	4	51	1		
	4	52	1		
	4	53	1		
	4	54	1		
	4	55	1		
	4	56	1		
	4	57	1		
	4	58	1		
	4	59	1		
	4	60	1		
	4	61	1		
	4	62	1		
	4	63	0		
	4	64	0		
	5	65	2		
	5	66	1		
	5	67	1		
	5	68	1		
	5	69	1		
	5	70	1		
	5	71	1		
	5	72	1		
	5	73	1		
	5	74	1		
	5	75	1		
	5	76	1		
	5	77	1		
	5	78	1		
	5	79	1		
	5	80	1		
	6	81	2		
	6	82	1		
	6	83	1		
	6	84	1		

	6	85	1		
	6	86	1		
	6	87	1		
	6	88	1		
	6	89	1		
	6	90	1		
	6	91	1		
	6	92	1		
	6	93	1		
	6	94	1		
	6	95	1		
	6	96	1		
	7	97	2		
	7	98	1		
	7	99	1		
	7	100	1		
	7	101	1		
	7	102	1		
	7	103	1		
	7	104	1		
	7	105	1		
	7	106	1		
	7	107	1		
	7	108	1		
	7	109	1		
	7	110	1		
	7	111	1		
	7	112	1		
	8	113	2		
	8	114	1		
	8	115	1		
	8	116	1		
	8	117	1		
	8	118	1		
	8	119	1		
	8	120	1		
	8	121	1		
	8	122	1		
	8	123	1		
	8	124	1		
	8	125	1		
	8	126	1		
	8	127	0		
	8	128	0		
	9	129	2		

	9	130	1		
	9	131	1		
	9	132	1		
	9	133	1		
	9	134	1		
	9	135	1		
	9	136	1		
	9	137	1		
	9	138	1		
	9	139	1		
	9	140	1		
	9	141	1		
	9	142	1		
	9	143	1		
	9	144	1		
	10	145	2		
	10	146	1		
	10	147	1		
	10	148	1		
	10	149	1		
	10	150	1		
	10	151	1		
	10	152	1		
	10	153	1		
	10	154	1		
	10	155	1		
	10	156	1		
	10	157	1		
	10	158	1		
	10	159	1		
	10	160	1		
	11	161	2		
	11	162	1		
	11	163	1		
	11	164	1		
	11	165	1		
	11	166	1		
	11	167	1		
	11	168	1		
	11	169	1		
	11	170	1		
	11	171	1		
	11	172	1		
	11	173	1		
	11	174	1		

	11	175	1		
	11	176	1		
	12	177	2		
	12	178	1		
	12	179	1		
	12	180	1		
	12	181	1		
	12	182	1		
	12	183	1		
	12	184	1		
	12	185	1		
	12	186	1		
	12	187	1		
	12	188	1		
	12	189	1		
	12	190	1		
	12	191	0		
	12	192	0		
	13	193	2		
	13	194	1		
	13	195	1		
	13	196	1		
	13	197	1		
	13	198	1		
	13	199	1		
	13	200	1		
	13	201	1		
	13	202	1		
	13	203	1		
	13	204	1		
	13	205	1		
	13	206	1		
	13	207	1		
	13	208	1		
	14	209	2		
	14	210	1		
	14	211	1		
	14	212	1		
	14	213	1		
	14	214	1		
	14	215	1		
	14	216	1		
	14	217	1		
	14	218	1		
	14	219	1		

	14	220	1		
	14	221	1		
	14	222	1		
	14	223	1		
	14	224	1		
	15	225	2		
	15	226	1		
	15	227	1		
	15	228	1		
	15	229	1		
	15	230	1		
	15	231	1		
	15	232	1		
	15	233	1		
	15	234	1		
	15	235	1		
	15	236	1		
	15	237	1		
	15	238	1		
	15	239	1		
	15	240	1		
	16	241	2		
	16	242	1		
	16	243	1		
	16	244	1		
	16	245	1		
	16	246	1		
	16	247	1		
	16	248	1		
	16	249	1		
	16	250	1		
	16	251	1		
	16	252	1		
	16	253	1		
	16	254	1		
	16	255	0		
	16	256	0		
	17	257	2		
	17	258	1		
	17	259	1		
	17	260	1		
	17	261	1		
	17	262	1		
	17	263	1		
	17	264	1		

	17	265	1		
	17	266	1		
	17	267	1		
	17	268	1		
	17	269	1		
	17	270	1		
	17	271	1		
	17	272	1		
	18	273	2		
	18	274	1		
	18	275	1		
	18	276	1		
	18	277	1		
	18	278	1		
	18	279	2		
	18	280	1		
	18	281	1		
	18	282	1		
	18	283	1		
	18	284	1		
	18	285	1		
	18	286	1		
	18	287	1		
	18	288	1		
	19	289	2		
	19	290	1		
	19	291	1		
	19	292	1		
	19	293	1		
	19	294	1		
	19	295	1		
	19	296	1		
	19	297	1		
	19	298	1		
	19	299	1		
	19	300	1		
	19	301	1		
	19	302	1		
	19	303	1		
	19	304	1		
	20	305	2		
	20	306	1		
	20	307	1		
	20	308	1		
	20	309	1		

	20	310	1		
	20	311	1		
	20	312	1		
	20	313	1		
	20	314	1		
	20	315	1		
	20	316	1		
	20	317	1		
	20	318	1		
	20	319	0		
	20	320	0		
	21	321	2		
	21	322	1		
	21	323	1		
	21	324	1		
	21	325	1		
	21	326	1		
	21	327	1		
	21	328	1		
	21	329	1		
	21	330	1		
	21	331	1		
	21	332	1		
	21	333	1		
	21	334	1		
	21	335	1		
	21	336	1		
	22	337	2		
	22	338	1		
	22	339	1		
	22	340	1		
	22	341	1		
	22	342	1		
	22	343	1		
	22	344	1		
	22	345	1		
	22	346	1		
	22	347	1		
	22	348	1		
	22	349	1		
	22	350	1		
	22	351	1		
	22	352	1		
	23	353	2		
	23	354	1		

	23	355	1		
	23	356	1		
	23	357	1		
	23	358	1		
	23	359	1		
	23	360	1		
	23	361	1		
	23	362	1		
	23	363	1		
	23	364	1		
	23	365	1		
	23	366	1		
	23	367	1		
	23	368	1		
	24	369	2		
	24	370	1		
	24	371	1		
	24	372	1		
	24	373	1		
	24	374	1		
	24	375	1		
	24	376	1		
	24	377	1		
	24	378	1		
	24	379	1		
	24	380	1		
	24	381	1		
	24	382	1		
	24	383	0		
	24	384	0		
	25	385	2		
	25	386	1		
	25	387	1		
	25	388	1		
	25	389	1		
	25	390	1		
	25	391	1		
	25	392	1		
	25	393	1		
	25	394	1		
	25	395	1		
	25	396	1		
	25	397	1		
	25	398	1		
	25	399	1		

	25	400	1		
	26	401	2		
	26	402	1		
	26	403	1		
	26	404	1		
	26	405	1		
	26	406	1		
	26	407	2		
	26	408	1		
	26	409	1		
	26	410	1		
	26	411	1		
	26	412	1		
	26	413	1		
	26	414	1		
	26	415	1		
	26	416	1		
	27	417	2		
	27	418	1		
	27	419	1		
	27	420	1		
	27	421	1		
	27	422	1		
	27	423	1		
	27	424	1		
	27	425	1		
	27	426	1		
	27	427	1		
	27	428	1		
	27	429	1		
	27	430	1		
	27	431	1		
	27	432	1		
	28	433	2		
	28	434	1		
	28	435	1		
	28	436	1		
	28	437	1		
	28	438	1		
	28	439	1		
	28	440	1		
	28	441	1		
	28	442	1		
	28	443	1		
	28	444	1		

	28	445	1		
	28	446	1		
	28	447	0		
	28	448	0		
	29	449	2		
	29	450	1		
	29	451	1		
	29	452	1		
	29	453	1		
	29	454	1		
	29	455	1		
	29	456	1		
	29	457	1		
	29	458	1		
	29	459	1		
	29	460	1		
	29	461	1		
	29	462	1		
	29	463	1		
	29	464	1		
	30	465	2		
	30	466	1		
	30	467	1		
	30	468	1		
	30	469	1		
	30	470	1		
	30	471	1		
	30	472	1		
	30	473	1		
	30	474	1		
	30	475	1		
	30	476	1		
	30	477	1		
	30	478	1		
	30	479	1		
	30	480	1		
	31	481	2		
	31	482	1		
	31	483	1		
	31	484	1		
	31	485	1		
	31	486	1		
	31	487	1		
	31	488	1		
	31	489	1		

	31	490	1		
	31	491	1		
	31	492	1		
	31	493	1		
	31	494	1		
	31	495	1		
	31	496	1		
	32	497	2		
	32	498	1		
	32	499	1		
	32	500	1		
	32	501	1		
	32	502	1		
	32	503	1		
	32	504	1		
	32	505	1		
	32	506	1		
	32	507	1		
	32	508	1		
	32	509	1		
	32	510	1		
	32	511	0		
	32	512	0		
	33	513	2		
	33	514	1		
	33	515	1		
	33	516	1		
	33	517	1		
	33	518	1		
	33	519	1		
	33	520	1		
	33	521	1		
	33	522	1		
	33	523	1		
	33	524	1		
	33	525	1		
	33	526	1		
	33	527	1		
	33	528	1		
	34	529	2		
	34	530	1		
	34	531	1		
	34	532	1		
	34	533	1		
	34	534	1		

	34	535	2		
	34	536	1		
	34	537	1		
	34	538	1		
	34	539	1		
	34	540	1		
	34	541	1		
	34	542	1		
	34	543	1		
	34	544	1		
	35	545	2		
	35	546	1		
	35	547	1		
	35	548	1		
	35	549	1		
	35	550	1		
	35	551	1		
	35	552	1		
	35	553	1		
	35	554	1		
	35	555	1		
	35	556	1		
	35	557	1		
	35	558	1		
	35	559	1		
	35	560	1		
	36	561	2		
	36	562	1		
	36	563	1		
	36	564	1		
	36	565	1		
	36	566	1		
	36	567	1		
	36	568	1		
	36	569	1		
	36	570	1		
	36	571	1		
	36	572	1		
	36	573	1		
	36	574	1		
	36	575	0		
	36	576	0		
	37	577	2		
	37	578	1		
	37	579	1		

	37	580	1		
	37	581	1		
	37	582	1		
	37	583	1		
	37	584	1		
	37	585	1		
	37	586	1		
	37	587	1		
	37	588	1		
	37	589	1		
	37	590	1		
	37	591	1		
	37	592	1		
	38	593	2		
	38	594	1		
	38	595	1		
	38	596	1		
	38	597	1		
	38	598	1		
	38	599	1		
	38	600	1		
	38	601	1		
	38	602	1		
	38	603	1		
	38	604	1		
	38	605	1		
	38	606	1		
	38	607	1		
	38	608	1		
	39	609	2		
	39	610	1		
	39	611	1		
	39	612	1		
	39	613	1		
	39	614	1		
	39	615	1		
	39	616	1		
	39	617	1		
	39	618	1		
	39	619	1		
	39	620	1		
	39	621	1		
	39	622	1		
	39	623	1		
	39	624	1		

	40	625	2		
	40	626	1		
	40	627	1		
	40	628	1		
	40	629	1		
	40	630	1		
	40	631	1		
	40	632	1		
	40	633	1		
	40	634	1		
	40	635	1		
	40	636	1		
	40	637	1		
	40	638	1		
	40	639	0		
	40	640	0		
	41	641	2		
	41	642	1		
	41	643	1		
	41	644	1		
	41	645	1		
	41	646	1		
	41	647	1		
	41	648	1		
	41	649	1		
	41	650	1		
	41	651	1		
	41	652	1		
	41	653	1		
	41	654	1		
	41	655	1		
	41	656	1		
	42	657	2		
	42	658	1		
	42	659	1		
	42	660	1		
	42	661	1		
	42	662	1		
	42	663	2		
	42	664	1		
	42	665	1		
	42	666	1		
	42	667	1		
	42	668	1		
	42	669	1		

	42	670	1		
	42	671	1		
	42	672	1		
	43	673	2		
	43	674	1		
	43	675	1		
	43	676	1		
	43	677	1		
	43	678	1		
	43	679	1		
	43	680	1		
	43	681	1		
	43	682	1		
	43	683	1		
	43	684	1		
	43	685	1		
	43	686	1		
	43	687	1		
	43	688	1		
	44	689	2		
	44	690	1		
	44	691	1		
	44	692	1		
	44	693	1		
	44	694	1		
	44	695	1		
	44	696	1		
	44	697	1		
	44	698	1		
	44	699	1		
	44	700	1		
	44	701	1		
	44	702	1		
	44	703	0		
	44	704	0		
	45	705	2		
	45	706	1		
	45	707	1		
	45	708	1		
	45	709	1		
	45	710	1		
	45	711	2		
	45	712	1		
	45	713	1		
	45	714	1		



	45	715	2		
	45	716	1		
	45	717	1		
	45	718	2		
	45	719	1		
	45	720	1		
	46	721	2		
	46	722	1		
	46	723	1		
	46	724	1		
	46	725	1		
	46	726	1		
	46	727	2		
	46	728	1		
	46	729	1		
	46	730	1		
	46	731	1		
	46	732	1		
	46	733	1		
	46	734	1		
	46	735	1		
	46	736	1		
	47	737	2		
	47	738	1		
	47	739	1		
	47	740	1		
	47	741	1		
	47	742	1		
	47	743	2		
	47	744	1		
	47	745	1		
	47	746	1		
	47	747	2		
	47	748	1		
	47	749	1		
	47	750	2		
	47	751	1		
	47	752	1		
	48	753	2		
	48	754	1		
	48	755	1		
	48	756	1		
	48	757	2		
	48	758	2		
	48	759	2		

	48	760	1		
	48	761	1		
	48	762	1		
	48	763	1		
	48	764	1		
	48	765	0		
	48	766	0		
	48	767	0		
	48	768	0		
	49	769	2		
	49	770	1		
	49	771	1		
	49	772	1		
	49	773	1		
	49	774	1		
	49	775	2		
	49	776	1		
	49	777	1		
	49	778	1		
	49	779	2		
	49	780	1		
	49	781	1		
	49	782	2		
	49	783	1		
	49	784	1		
	50	785	2		
	50	786	1		
	50	787	1		
	50	788	1		
	50	789	1		
	50	790	1		
	50	791	2		
	50	792	1		
	50	793	1		
	50	794	1		
	50	795	1		
	50	796	1		
	50	797	0		
	50	798	0		
	50	799	0		
	50	800	0		
	51	801	0		
	51	802	0		
	51	803	0		
	51	804	0		

	51	805	2		
	51	806	1		
	51	807	2		
	51	808	1		
	51	809	1		
	51	810	1		
	51	811	2		
	51	812	1		
	51	813	1		
	51	814	2		
	51	815	1		
	51	816	1		
	52	817	2		
	52	818	1		
	52	819	1		
	52	820	1		
	52	821	2		
	52	822	2		
	52	823	2		
	52	824	1		
	52	825	1		
	52	826	1		
	52	827	1		
	52	828	1		
	52	829	0		
	52	830	0		
	52	831	0		
	52	832	0		
	53	833	2		
	53	834	1		
	53	835	2		
	53	836	1		
	53	837	1		
	53	838	1		
	53	839	2		
	53	840	1		
	53	841	1		
	53	842	1		
	53	843	1		
	53	844	1		
	53	845	2		
	53	846	1		
	53	847	2		
	53	848	1		
	54	849	2		

	54	850	1		
	54	851	1		
	54	852	2		
	54	853	1		
	54	854	1		
	54	855	2		
	54	856	1		
	54	857	1		
	54	858	1		
	54	859	1		
	54	860	1		
	54	861	2		
	54	862	1		
	54	863	1		
	54	864	1		
	55	865	2		
	55	866	1		
	55	867	1		
	55	868	1		
	55	869	1		
	55	870	1		
	55	871	2		
	55	872	1		
	55	873	1		
	55	874	1		
	55	875	2		
	55	876	1		
	55	877	1		
	55	878	2		
	55	879	1		
	55	880	1		
	56	881	2		
	56	882	1		
	56	883	1		
	56	884	1		
	56	885	1		
	56	886	1		
	56	887	2		
	56	888	1		
	56	889	1		
	56	890	1		
	56	891	2		
	56	892	1		
	56	893	2		
	56	894	1		

	56	895	1		
	56	896	1		
	57	897	2		
	57	898	1		
	57	899	2		
	57	900	1		
	57	901	1		
	57	902	1		
	57	903	2		
	57	904	1		
	57	905	1		
	57	906	1		
	57	907	1		
	57	908	1		
	57	909	2		
	57	910	1		
	57	911	2		
	57	912	1		
	58	913	2		
	58	914	1		
	58	915	1		
	58	916	2		
	58	917	1		
	58	918	1		
	58	919	2		
	58	920	1		
	58	921	1		
	58	922	1		
	58	923	1		
	58	924	1		
	58	925	2		
	58	926	1		
	58	927	1		
	58	928	1		
	59	929	2		
	59	930	1		
	59	931	1		
	59	932	1		
	59	933	1		
	59	934	1		
	59	935	2		
	59	936	1		
	59	937	1		
	59	938	1		
	59	939	2		

	59	940	1		
	59	941	1		
	59	942	2		
	59	943	1		
	59	944	1		
	60	945	2		
	60	946	1		
	60	947	1		
	60	948	1		
	60	949	1		
	60	950	1		
	60	951	2		
	60	952	1		
	60	953	1		
	60	954	1		
	60	955	2		
	60	956	1		
	60	957	2		
	60	958	1		
	60	959	1		
	60	960	1		
	61	961	2		
	61	962	1		
	61	963	2		
	61	964	1		
	61	965	1		
	61	966	1		
	61	967	2		
	61	968	1		
	61	969	1		
	61	970	1		
	61	971	1		
	61	972	1		
	61	973	2		
	61	974	1		
	61	975	2		
	61	976	1		
	62	977	2		
	62	978	1		
	62	979	1		
	62	980	2		
	62	981	1		
	62	982	1		
	62	983	2		
	62	984	1		

	62	985	1		
	62	986	1		
	62	987	1		
	62	988	1		
	62	989	2		
	62	990	1		
	62	991	1		
	62	992	1		
	63	993	2		
	63	994	1		
	63	995	1		
	63	996	1		
	63	997	1		
	63	998	1		
	63	999	2		
	63	1000	1		
	63	1001	1		
	63	1002	1		
	63	1003	2		
	63	1004	1		
	63	1005	1		
	63	1006	2		
	63	1007	1		
	63	1008	1		
	64	1009	2		
	64	1010	1		
	64	1011	1		
	64	1012	1		
	64	1013	1		
	64	1014	1		
	64	1015	2		
	64	1016	1		
	64	1017	1		
	64	1018	1		
	64	1019	2		
	64	1020	1		
	64	1021	2		
	64	1022	1		
	64	1023	1		
	64	1024	1		
	65	1025	2		
	65	1026	1		
	65	1027	1		
	65	1028	1		
	65	1029	1		

	65	1030	1		
	65	1031	2		
	65	1032	1		
	65	1033	1		
	65	1034	1		
	65	1035	2		
	65	1036	1		
	65	1037	1		
	65	1038	2		
	65	1039	1		
	65	1040	1		
	66	1041	2		
	66	1042	1		
	66	1043	1		
	66	1044	1		
	66	1045	1		
	66	1046	1		
	66	1047	2		
	66	1048	1		
	66	1049	1		
	66	1050	1		
	66	1051	1		
	66	1052	1		
	66	1053	1		
	66	1054	1		
	66	1055	1		
	66	1056	1		
	67	1057	2		
	67	1058	1		
	67	1059	1		
	67	1060	1		
	67	1061	1		
	67	1062	1		
	67	1063	2		
	67	1064	1		
	67	1065	1		
	67	1066	1		
	67	1067	2		
	67	1068	1		
	67	1069	1		
	67	1070	2		
	67	1071	1		
	67	1072	1		
	68	1073	2		
	68	1074	1		

	68	1075	1		
	68	1076	1		
	68	1077	2		
	68	1078	2		
	68	1079	2		
	68	1080	1		
	68	1081	1		
	68	1082	1		
	68	1083	1		
	68	1084	1		
	68	1085	0		
	68	1086	0		
	68	1087	0		
	68	1088	0		

DAMN.: RHYTHMIC SPECTRAL ANALYSIS OF KENDRICK LAMAR'S BASSLINE FOR GOD.

MARK PETERING, PH.D.

2=ATTACK, 1=SUSTAIN, 0=REST

(1088 data points using 16th note as smallest duration)

